

# IMPLANT TRIBUNE

The World's Dental Implant Newspaper · U.S. Edition

MARCH 2010

www.implant-tribune.com

VOL. 5, No. 3



**Dental industry's future**  
Implants and bone graft  
market to top \$4.5B by 2012

▶Page 2



**ICOI event: learning & jazz**  
New Orleans is the site  
of the next spring symposium

▶Page 13



**New products**  
Astra Tech launches  
OsseoSpeed TX line at AO

▶Page 14

## Scenes from the AO's annual meeting



Zimmer Dental is celebrating the 10th anniversary of its Tapered Screw-Vent Implant System. Featured at AO, more than 2 million units have been sold. (Photo/Humberto Estrada, DTA)

The Academy of Osseointegration's annual meeting took place from March 4-6 in Orlando. To catch a glimpse of the many exhibitors who showcased innovative implant technology at the event, turn to Page 12B.

AD

**Dental Collab** BETA  
FINALLY A SOLUTION FOR GETTING  
THAT SECOND OPINION.  
WWW.DENTALCOLLAB.COM

FIRST MONTH  
FREE  
CODE: ITDC09



## Esthetic management of a single dental implant in the esthetic zone

By Michael Sonick, DMD

A medically and periodontally stable 37-year-old man presented with coronally fractured tooth #9, which had a history of endodontic treatment (Figs. 1a, 1b). The tooth was deemed restoratively hopeless.

### Treatment plan

1. Extraction of tooth #9 and socket preservation
2. Three-month healing period
3. Placement of implant #9 and connective tissue graft
4. Three-month healing period
5. Implant #9 exposure, placement of healing abutment and connective tissue graft
6. Three-month healing period
6. Final implant #9 crown restoration

### Extraction and socket preservation of tooth #9

After oral sedation with 0.25 mg triazolam one hour prior to surgery and local anesthetic induction using 2 percent lidocaine with 1:100,000 epinephrine and 0.5 percent bupivacaine with 1:200,000 epinephrine, a sulcular incision was made circumferentially around tooth #9. The remaining root was extracted atraumatically using a piezoelectric periotome device (Fig. 2).



Fig. 1a, left: Hopelessly fractured tooth #9.

Fig. 1b, below: Periapical radiograph of endodontically treated tooth #9

Thorough degranulation of the extraction site with a pear-shaped carbide finishing bur and Prichard curette proceeded. No dehiscence or fenestration was detected. Freeze-dried bone allograft (FDBA) was used to obliterate the extraction socket.

A bioabsorbable collagen plug (CollaPlug®, Zimmer Dental, Carlsbad, Calif.) was used to cover the graft. The area was secured using 4-0 expanded polytetrafluoroethylene (ePTFE) suture (Fig. 3). The restorative dentist temporized space #9 with an interim removable partial



(Clinical photos/Provided by Dr. Michael Sonick)

→ IT page 4B

AD

## AUXILIARIES: Are you implant certified?

Patient Questions... Insurance Coverage... Tracking...  
Operatory Set Up... Radiographic Protocol...  
Assessment Parameters... Hygiene Instrumentation...  
Communications with the Lab...

Implant Training Makes all the Difference!



Dental Hygiene Implant Certification Program® (DHICP) • Practice Management Implant Certification Program® (PMICP)

Dental Assisting Implant Certification Program® (DAICP) • Implant Coordinator Training Program®

The ADIA presents these comprehensive courses at many venues throughout the year.



To find out more about these exciting programs and about membership in the ADIA visit our website:

www.adiaonline.org

# World dental implant and bone graft market to top \$4.5B by 2012

Global sales of dental implant systems, fast becoming the preferred restoration for replacement of missing or extracted teeth or as supports for dentures, crowns and bridges, are expected to maintain double-digit growth during the next five years, soaring to more than \$4.5 billion, according to "Implant-Based Dental Reconstruction: The Worldwide Dental Implant and Bone Graft Market," second edition, a new study released from Kalorama Information.

Sales of dental implants and abutments rose more than 15 percent in 2006 alone reaching nearly \$2 billion, led by Europe, where the popularity of implants saw sales peaking at \$760 million or 42 percent of the global market.

Advanced bone grafting and regeneration techniques have radically expanded the possibilities for implant-based restorative dentistry. World sales of dental bone grafts reached \$150 million in 2006, up 12 percent from 2005.

The report projects the use of bone grafts will more than double by 2012 with revenues reaching \$266 million.

Grafting techniques are making

*'... the future of BMP and increased use of grafts and implants looks very promising.'*

it possible to expand the candidate pool for implants to include a sizable population of edentulous patients who were poor candidates for dental implantation due to severe bone resorption.

"The most closely watched research and development projects in dental bone grafting today involve bone morphogenetic protein (BMP) products," noted Anne Anscorb, the report's author.

"BMPs have the potential to transform the bone grafting market and surpass all other products on the market including synthetic substitutes, allografts, and demineralized bone matrices. With the announcement in March that the FDA approved Medtronic's InFuse Bone Graft for certain oral maxillofacial and dental regenerative bone grafting procedures, the future of

BMP and increased use of grafts and implants looks very promising."

Implant-based dental reconstruction includes revenue forecasts for each segment through 2016, global market share for four geographic regions, more than 35 tables and figures with detailed market data, reviews of new products, and computer-aided dentistry and reimbursement trends.

It can be purchased directly from Kalorama Information by visiting [www.kaloramainformation.com/Implant-Based-Dental-1399457](http://www.kaloramainformation.com/Implant-Based-Dental-1399457). It is also available at [MarketResearch.com](http://MarketResearch.com). ■

CK Dental Industries  
Phone: (800) 675-2537  
Fax: (800) 634-1788  
[www.ckdental.net](http://www.ckdental.net)

## Cadent iTero added to curriculum at LVI

Cadent, a leading provider of 3-D digital and CAD/CAM solutions, recently announced it has signed an agreement with the Las Vegas Institute for Advanced Dental Studies (LVI), one of the world's premier post-graduate dental training facilities, whereby the iTero digital impression system will become the exclusive digital impression technology integrated into LVI's curriculum.

LVI students who attend Core II (orthotic maintenance, adjustment and essential esthetic reconstructive techniques) and Core III (mastering dynamic adhesion in complex reconstructive cases) will be exposed to the iTero system.

Core V (comprehensive esthetic occlusal reconstruction) and Core VII (full-mouth reconstruction — essential tools for finalization of neuromuscular rehabilitation) programs will have the opportunity to utilize iTero in the restorative process. iTero clinical trainers will be onsite during

the programs to provide training and hands-on support for LVI students to obtain live case experience working with the iTero system.

Along with Cadent, the LVI partner laboratories (The Aurum Group, DTI MicroDental, Las Vegas Esthetics and Williams Dental Lab) will provide the comprehensive prosthetic case development from the iTero digital impressions.

"The integration of iTero into the LVI curriculum supports our expanding network of educational opportunities for new and existing iTero dentists," said Timothy Mack, president and chief executive officer of Cadent. "Cadent recently completed its 2 millionth 3-D digital case for restorative dentists and orthodontists, a record of proven success which is required even to earn recognition by the faculty at the LVI.

"We are especially pleased that iTero has been deemed worthy of a partnership with LVI, a world-class

organization that provides dentists with the continuing education needed to further develop their restorative dentistry practice."

"The inclusion of the iTero digital impression system supports LVI's ongoing efforts to integrate the best of dentistry's technological advances into the LVI curriculum," said William G. Dickerson, DDS, founder and chief executive officer of LVI. "The era of digital dentistry has arrived and the addition of iTero to our programs will enable LVI students to become proficient in the industry's most successful digital impression system."

iTero serves more than 1,700 dentists in 12 countries, and is the only digital impression technology that does not require powdering or coating of the teeth, enabling the processing of more complex cases than any other system. ■

(Source: Cadent)

## IMPLANT TRIBUNE

The World's Newspaper of Implantology · U.S. Edition

### Publisher & Chairman

Torsten Oemus  
[t.oemus@dental-tribune.com](mailto:t.oemus@dental-tribune.com)

### Vice President Global Sales

Peter Witteczek  
[p.witteczek@dental-tribune.com](mailto:p.witteczek@dental-tribune.com)

### Chief Operating Officer

Eric Seid  
[e.seid@dental-tribune.com](mailto:e.seid@dental-tribune.com)

### Group Editor & Designer

Robin Goodman  
[r.goodman@dental-tribune.com](mailto:r.goodman@dental-tribune.com)

### Editor in Chief

Sascha A. Jovanovic, DDS, MS  
[sascha@jovanoviconline.com](mailto:sascha@jovanoviconline.com)

### Managing Editor/Designer

Implant & Endo Tribunes  
Sierra Rendon  
[s.rendon@dental-tribune.com](mailto:s.rendon@dental-tribune.com)

### Managing Editor/Designer

Ortho Tribune & Show Dailies  
Kristine Colker  
[k.colker@dental-tribune.com](mailto:k.colker@dental-tribune.com)

### Online Editor

Fred Michmershuizen  
[f.michmershuizen@dental-tribune.com](mailto:f.michmershuizen@dental-tribune.com)

### Account Manager

Humberto Estrada  
[h.estrada@dental-tribune.com](mailto:h.estrada@dental-tribune.com)

### Marketing Manager

Anna Wlodarczyk  
[a.wlodarczyk@dental-tribune.com](mailto:a.wlodarczyk@dental-tribune.com)

### Marketing & Sales Assistant

Lorrie Young  
[l.young@dental-tribune.com](mailto:l.young@dental-tribune.com)

### C.E. Manager

Julia Wehkamp  
[j.wehkamp@dental-tribune.com](mailto:j.wehkamp@dental-tribune.com)

Dental Tribune America, LLC  
213 West 35th Street, Suite 801  
New York, NY 10001  
Phone: (212) 244-7181, Fax: (212) 244-7185



Published by  
Dental Tribune America

© 2010, Dental Tribune America, LLC.  
All rights reserved.

Dental Tribune makes every effort to report clinical information and manufacturer's product news accurately, but cannot assume responsibility for the validity of product claims, or for typographical errors. The publishers also do not assume responsibility for product names or claims, or statements made by advertisers. Opinions expressed by authors are their own and may not reflect those of Dental Tribune International.

## Editorial Advisory Board

**Dr. Sascha Jovanovic, Editor in Chief**

Dr. Bernard Touati

Dr. Jack T. Krauser

Dr. Andre Saadoun

Dr. Gary Henkel

Dr. Doug Deporter

Dr. Michael Norton

Dr. Ken Serota

Dr. Axel Zoellner

Dr. Glen Liddelow

Dr. Marius Steigmann

**Tell us  
what  
you  
think!**

Do you have general comments or criticism you would like to share? Is there a particular topic you would like to see more articles about? Let us know by e-mailing us at [feedback@dental-tribune.com](mailto:feedback@dental-tribune.com). If you would like to make any change to your subscription (name, address or to opt out) please send us an e-mail at [database@dental-tribune.com](mailto:database@dental-tribune.com) and be sure to include which publication you are referring to. Also, please note that subscription changes can take up to 6 weeks to process.

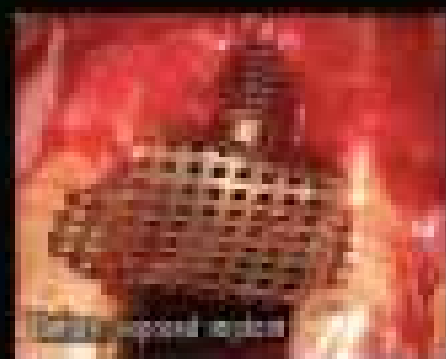
## II Corrections

Implant Tribune strives to maintain the utmost accuracy in its news and clinical reports. If you find a factual error or content that requires clarification, please report the details to Managing Editor Sierra Rendon at [s.rendon@dental-tribune.com](mailto:s.rendon@dental-tribune.com).

# OsteoCel<sup>®</sup>

## The Cellular Advantage.

For more information or to place an order call 800.441.3100



Controlled porous structure



Injectable bone graft in place  
ready to mesh fasten



Securely attached device

Image Aggregation Clinical 1000

### A Bone Matrix Product Containing Stem Cells.

#### The Properties of Autograft without Associated Risks

The proprietary processing technology that produces OsteoCel<sup>®</sup> results in a viable bone matrix product that preserves the native stem cells found in marrow rich bone. It is the only product available today that has the desired beneficial properties of autograft – osteoinduction, osteoconduction and osteogenesis – and that allows surgeons to provide their patients with optimal bone growth conditions without the added risk and cost of a secondary procedure.

#### Low Immunogenicity

Monoclonal stem cells are IMMUNE-PRIVILEGED cells that do not stimulate a cellular immune response. OsteoCel<sup>®</sup> does not activate T cell pathways, as shown in vitro from Mixed Lymphocyte Reaction (MLR) testing.

#### Histologic Evidence

Positive clinical use of OsteoCel since 2005 demonstrates bone forming ability. Histology from a human sinus augmentation study using OsteoCel shows substantial vital bone content at 18 weeks, with very low residual graft retained.<sup>1</sup>

<sup>1</sup> Histologic Evaluation of a Stem Cell Based Sinus Augmentation Procedure: A Case Series. — *Osselets, Highlight, London*. — *Journal of Paris*, April 2007

#### Bone Formation

Stem cells contained in OsteoCel are capable of differentiating into bone cells. Every lot of OsteoCel is tested for bone forming potential.

#### Viable Cell Content

The osteogenic potential comes from the stem cells in OsteoCel. Following processing of marrow rich bone, several testing demonstrates osteogenic potential resulting in the following values:

- High supply of stem cells. Greater than 50,000 cells/cc
- Viability. Greater than 70% cell viability
- Positive immunogenicity in vitro cell culture assay

[www.acesurgical.com](http://www.acesurgical.com)

← **IT** page 1B

denture.

After three months of uneventful healing (Fig. 4), Stage 1 implant placement was initiated.

**#9 fixture placement and connective tissue graft**

After oral sedation with 0.25 mg triazolam and local anesthetic induction using 2 percent lidocaine with 1:100,000 epinephrine and 0.5 percent bupivacaine with 1:200,000 epinephrine, a flap was created using a trapezoidal papilla-sparing incision design that involved a palatally oriented crestal incision over the #9 site with two vertical releasing incisions made on the buccal, both avoiding the mesial and distal papillae.

A full-thickness flap was raised past the mucogingival junction. Degranulation of the site with a pear-shaped carbide finishing bur and Neumeyer bur revealed adequate apico-coronal, bucco-lingual and mesio-distal dimensions for implant placement.

After osteotomy preparation, a rough-surfaced, internal hex 4 mm (diameter) by 13 mm (length) implant was placed into the filled site (NanoTite® Parallel Walled Certain® Implant, BIOMET 3i, Palm Beach Gardens, Fla.) (Fig. 5).

Primary stability was achieved, and a cover screw was placed.

In order to form an esthetic soft-tissue profile by expanding mucosal dimensions, a connective tissue graft was harvested from the palate and placed on the buccal aspect of

the ridge overlying the implant. The graft was stabilized using 5-0 chromic gut sutures (Fig. 6).

After periosteal release via lateral scalpel incisions, the flap was primarily closed with 4-0 ePTFE sutures in an interrupted and horizontal mattress fashion (Fig. 7). The area was re-temporized with a resin-bonded fixed partial denture.

**Implant exposure with connective tissue graft**

The #9 site healed well and without incident after three months (Fig. 8). After using a tissue punch technique to remove the mucosa immediately coronal to the fixture (Fig. 9), a one-piece 4.1 mm (platform) by 5 mm (emergence profile) by 4 mm

→ **IT** page 7B



Fig. 2: Atraumatically extracted #9 tooth.

AD



**KAT Implants™**

**Implant strength you can rely on**

**Price you can afford**

- Single platform for mini, small, standard and wide diameter implants – any abutment will fit all implants
- Restore mini implants without a "lollipop" effect and cement contamination
- Mini implants are FDA approved for transitional and long-term applications
- Strength of the one-piece implant with versatility of two-piece implants
- Torque-activated screwless locking taper connection for accurate force calibration
- Precise tri-lobe abutment positioning without any rotational play
- Ultimate accuracy of the Pick-Up Abutment™ implant indexing method
- Implant length as short as 6.0mm
- 3.5mm implants may be used in the molar area due to high implant strength (425N)
- Healing Abutment Level Temporization™ (HALT™) for healthy soft tissue



[www.katimplants.com](http://www.katimplants.com)




1-877-KAT-SYSTEM (877-528-7978)



Fig. 3a: Buccal view of socket preservation site.



Fig. 3b: Occlusal view of socket preservation site.



Fig. 4: Healing three months post-extraction and socket preservation.



Fig. 5a: Occlusal view of implant placement. Note palatal placement of fixture.



Fig. 5b: Buccal view of implant placement. Note papilla-sparing flap design.



# WMD LASERS™

## The Fine Art of Laser Dentistry

### The Experts Agree

Picasso  
is  
#1

"I tried many different lasers during my implant seminars. Picasso is by far the **best value and best quality** device here on the market today!"

Dr. Aron K. Garg  
International Lecturer  
Implant Dentistry



**Picasso**  
7.0 Watts  
8 Custom Presets  
3-Year Warranty  
**\$4995**



**Picasso Lite**  
2.5 Watts  
3 Custom Presets  
2-Year Warranty  
**\$2495**

### Thousands of Dental Practitioners Agree



"After evaluating several popular devices, the decision to purchase a Picasso was a no-brainer. The Picasso offers the **best performance, price, and warranty** while enhancing my ability to place implants."

Benjamin Jump D.D.S.  
Neighborhood Dental  
Rowlett, TX

### Special Offer

- FREE 6 CE Credits
- FREE Everything is Marketing by Fred Pryor, CEO 1-800-DENTIST
- FREE Cetacaine® Topical Anesthetic
- \$1500 GR Certificate from Fortune Management
- \$250 OFF Oriscopio® Laser Loupes



WMD LASERS  
Clinical, Research, Education, and Training

7405 Woodfield Blvd,  
Indianapolis, IN 46240



1-866-999-2635  
www.ArtificiallyLaser.com  
Product Video

# NEW ORLEANS

April 22-24, 2010

Implants  
and all that  
JAZZ!



## ICOI Spring Symposium and 13th IPS Symposium *New Orleans Marriott on Canal Street*

For more information please contact the ICOI Central Office  
at (973) 783-6300 or visit our website at [www.icoi.org](http://www.icoi.org)

Sponsored by:

**ADA CERP**® | Continuing Education  
Recognition Program

ACC - Accepted Program Provider  
FACEMAGD Credit 51UG - 800FU

Photo Credit: Richard Moore

ICOI is an ADA CERP Recognized Provider. ADA CERP is a service of the American Dental Association to assist dental professionals in identifying quality providers of continuing dental education. ADA CERP does not approve or endorse individual courses or instructors, nor does it imply acceptance of credit hours by boards of dentists. ICOI disclaims all liability for CE continuing education credits.

**ICOI**



**ADIA**



Fig. 6: Connective tissue graft secured in place over the buccal ridge.



Fig. 7: Primary closure of grafted implant site.



Fig. 8: Healing three months post-implant placement. Note the favorable position of the mucosal margin.



Fig. 9: Exposure of the #9 implant using a tissue-punch technique.



Fig. 10a: Soft-tissue graft inserted into the buccal pouch.



Fig. 10b: Placement of the healing abutment on the #9 implant.



Fig. 10c: Buccal view of site with graft in place.

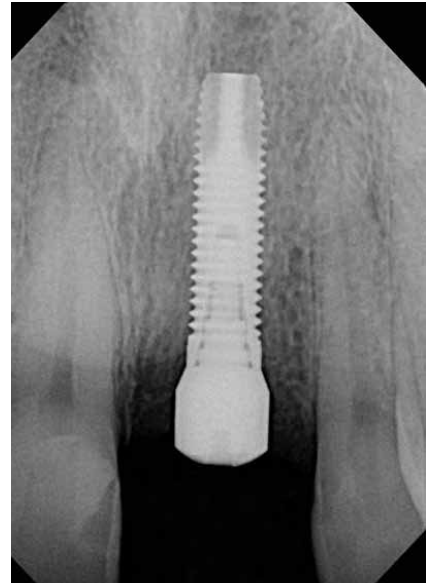


Fig. 11: Periapical radiograph of fracture at time of exposure. Note the favorable bone height.

← page 6B

(height) healing abutment (Certain® EP® Healing Abutment, BIOMET 3i, Palm Beach Gardens, Fla.) was placed on the #9 implant.

To further augment the buccal ridge dimension, another connective tissue graft was harvested from the palate.

A pouch-like envelope flap was raised over the labial ridge aspect into which the connective tissue was transplanted and fixed using 5-0 chromic gut suture (Fig. 10). The healing abutment remained exposed.

A periapical radiograph revealed sufficient bone height around the



Fig. 12a



Fig. 12b



Fig. 12c

Figs. 12a–12c: View of final restoration

→ page 10B

AD

AD

**Dental Collab** BETA  
 FINALLY A SOLUTION FOR MENTORING WITH EXPERTS & PEERS.  
 WWW.DENTALCOLLAB.COM

FIRST MONTH FREE  
 CODE: ITDC09

IT'S NEW

**Send us your case study!**

Have an interesting implant case you would like to share with 15,000 of your peers? To have your case study considered for publication in Implant Tribune, send your 800- to 1,200-word case study and up to 12 high-resolution photos to Managing Editor Sierra Rendon at [s.rendon@dental-tribune.com](mailto:s.rendon@dental-tribune.com). Authors will be notified of publication and have an opportunity to review the designed case study prior to final publication. Cases will be published pending editor approval and space availability.

**ATLAS**  
 Denture Comfort

It fits where others cannot.  
**NOW** it's available where others are not.

We are pleased to announce that our Atlas® Narrow-Body Implants will be distributed exclusively through Henry Schein Dental. The new benefits of far reaching distribution and support will undoubtedly be of great value to our customers.

Millions of edentulous patients have been neglected as implant candidates because they lack adequate bone structure, are unable to undergo lengthy procedures or have financial constraints.

Atlas has solved these problems.

- Available in 1.8, 2.2 & 2.4mm diameters
- 1 Hour, minimally invasive chairside procedure
- No C-rings, housings or adhesives
- Fewer components
- Fewer post-op visits
- More affordable

For additional course dates, locations and fees, contact us at 877-537-6982 or see our brochure on line [www.dentatus.com](http://www.dentatus.com)

Available exclusively through:  
**HENRY SCHEIN**  
 DENTAL

WORKSHOP SCHEDULE

|         |                 |
|---------|-----------------|
| Apr 9   | Chicago, IL     |
| Apr 16  | New York, NY    |
| May 14  | Pittsburgh, PA  |
| May 14  | Albany, NY      |
| May 21  | Orlando, FL     |
| Jun 4   | Louisville, KY  |
| Jun 18  | Los Angeles, CA |
| Jun 25  | Bay Area, CA    |
| July 23 | Portland, OR    |
| July 30 | Kansas City, KS |

Dentatus  
[www.dentatus.com](http://www.dentatus.com)

TO LEARN MORE ABOUT ATLAS, VISIT US AT ICOI BOOTH #316



Implant Direct™

simply smarter.

# Taking Mini-Implants to a New Dimension

## Application Specific Implants with All-in-One Packaging

### Narrow One- and Two-Piece Implants



3.2mmD

1.8mmD

# Legacy™ 3

3.0mmD  
ScrewDirect



1-Piece Implant with Straight Abutment, Snap Transfer & Cap Included: \$150



3.2mmD  
Legacy3



2-Piece Bone-Level Implant with Transfer, Abutment & Collar Included: \$175



3.3mmD  
SwissPlant



2-Piece Tissue-Level Implant with Transfer, Abutment & Collar Included: \$200

3.0mmD  
ScrewIndirect



1-Piece Implant with Screw Receiving Platform: \$150



3.0mmD  
GoDirect



1-Piece Implant with Locator® Compatible Platform: \$150



### Mini-Implant and Teeth-in-1Day™ Hands-On Surgical and Prosthetic Training

Friday March 12th,  
Los Angeles, CA

Friday April 9th,  
Los Angeles, CA

Saturday April 17th,  
San Francisco, CA

Friday May 21st,  
Los Angeles, CA

Sunday May 23rd,  
Newport Beach, CA

Saturday June 5th,  
Las Vegas, NV



8 CE Credits for all attending: \$ 295.00

Approved PACE Program Provider FAGD/MAGD Credit Approval does not imply acceptance by a state or provincial board of dentistry or AGD endorsement. 08/01/2009 to 07/31/2012

Register on-line [www.implantdirect.com](http://www.implantdirect.com)

Locator® is a registered trademark of Zest Anchor Company

# Nobel Biocare Customers

## Why use **\*\*NobelActive with an Internal Hex (Niznick 1990 Pat. #4,960,381)** when you can use **ReActive™ Tri-lobe Implants Save 65-70%**

Implant Direct Int'l  
 8840 W. Russell Road #210,  
 Las Vegas, NV 89148  
 Manufacturing/Sales: 1-818-444-3333  
[www.implantdirect.com](http://www.implantdirect.com)

### Surgically and/or Prosthetically Compatible Implants

### Select Type of Threads and Abutment

- RePlant with Temporary Titanium Abutment
- RePlus with Straight "Snappy" Abutment
- ReActive with Straight Preparable Abutment

**RePlant®** Body Dimensions: Matches Replace<sup>®</sup>

**RePlus®** Body Taper: For Bone Expansion

**ReActive™** Body Threads: For Increased Surface



RePlant implant surgically compatible with Nobel Replace<sup>®</sup> Drills  
 Nobel Replace<sup>®</sup> is a registered Trademark of Nobel Biocare  
 \*\*Nobel Active<sup>®</sup> is a registered Trademark of Nobel Biocare

### ReActive™ Tri-Lobe Implant

- Platform Shifting, Micro-threads, Deeper Threads, Round Apex
- All-in-one Packaging: Cover Screw, Transfer & Straight Abutment
- ReActive USA price = \$200
- NobelActive USA price = \$656



### Free Implants for Nobel Biocare Customers

3 Surgically Compatible, RePlant<sup>®</sup> Implants with Titanium Transfer/Temporary Abutments plus 2 Contoured Abutments

US List Price for 3 Implants, Abutments and Prosthetic Components:  
**RePlant = \$620**  
**NobelBioCare = \$1907**



| Compare US List Price | Straight Contoured | 15° Angled Contoured | Straight Snap-On | Gold w/o Tri-Lobe | Gold with Tri-Lobe | Temporary Abutment | Ball Attachment | Locator Abutment | Screw Receiving | 30° Screw Receiving |
|-----------------------|--------------------|----------------------|------------------|-------------------|--------------------|--------------------|-----------------|------------------|-----------------|---------------------|
| Implant Direct        | \$85               | \$85                 | \$85             | \$100             | \$100              | \$35               | \$107           | \$110            | \$85            | \$100               |
| Nobel Biocare         | \$170              | \$225                | \$201            | \$216             | \$216              | \$72               | \$217           | \$110            | \$229           | \$269               |
| Cost Savings          | 50%                | 62%                  | 58%              | 54%               | 54%                | 51%                | 51%             | 0%               | 63%             | 63%                 |

List prices as of 2/23/09

**FREE Introductory Offers at**  
[www.implantdirect.com](http://www.implantdirect.com)  
 Terms and Conditions Apply

← **IT** page 7B

fixture (Fig. 11). The resin-bonded fixed partial denture was replaced.

**Final prosthetics**

Final restoration of the #9 implant was performed three months post-exposure (Fig. 12).

The marginal height and contour of the #9 implant crown matched that of adjacent tooth #8, and a periapical radiograph showed suitable peri-implant bone height (Fig. 13). The patient was satisfied with the functional and esthetic result (Fig. 14).

**Postoperative instructions**

After each surgical procedure, the patient was instructed to take ibuprofen 600 mg every 4-6 hours, hydroc-



Fig. 13a: Tooth #9 prior to treatment.



Fig. 13c: Final implant-supported crown in #9 site.

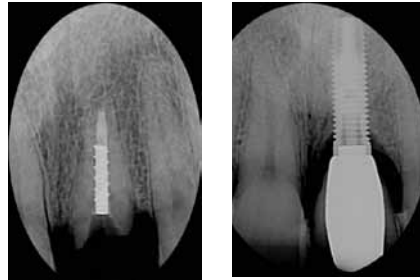


Fig. 13b, left: Periapical radiograph of tooth #9 prior to treatment

Fig. 13d, right: Periapical radiograph of final #9 implant.



Figs. 14a, 14b: Patient smile prior to, left, and post-treatment.

done 7.5 mg/acetaminophen 750 mg every 4-6 hours for pain and doxycy-

cline 100 mg qd for 10 days.

The patient was instructed not to brush at or near the surgical site but instead to rinse with 0.12 percent chlorhexidine or warm saline twice daily. The patient was also directed not to chew in the affected area for at least two weeks. Suture removal occurred at 10 to 14 days post-surgery. **IT**

**IT About the author**

Dr. Michael Sonick is a full-time practicing periodontist and implant surgeon in Fairfield, Conn. A renowned educator,



author and clinical researcher, he is a guest lecturer for the International Dental Program at New York University School of Dentistry, a former clinical assistant professor in the Department of Surgery at Yale University School of Medicine and University of Connecticut School of Dental Medicine, and a frequent lecturer on periodontics, dental implants and practice management for educational programs around the world.

He is the founder and director of the Fairfield County Dental Club, an advanced continuing education organization that provides courses on the latest developments in dentistry to clinicians and their staff. Sonick is also founder and director of Sonick Seminars, a multidisciplinary teaching institute located in his clinical office and teaching center. Interested participants can contact Carole at (203) 254-2006 or visit the Web site at [www.sonickdmd.com](http://www.sonickdmd.com)

ADS

**Sonick Seminars**

**Sign-up For These Great Courses!**

**Bone Regeneration for Ideal Implant Placement**  
April 1-2, 2010    April 14-15, 2011

**Implant & Periodontal Plastic Surgery in the Esthetic Zone**  
September 23-24, 2010    September 22-23, 2011

*Powerful & Thought-Provoking Continuing Education Courses*

[www.sonickseminars.com](http://www.sonickseminars.com)    Voice: 203.254.2006    **18 CEU**

# MEISINGER Bone Management®

**Transfer-Control Bone Replacing System**

This Bone Replacing System, suitable for use with all current dental implant systems, permits precise and standardized transplantation of autogenous bone cylinders. Different types of bone burs are available according to three groups of diameters. Within each group the instruments are adapted to each other so that the outer diameter of the abrasive bur or the diameter of the wheel cutter correlates with the inner diameter of the trephine. A press fit is often produced between the cylindrical bone autograft and the prepared recipient site. The bone cylinder can then be strengthened with a fixation screw (sold separately).

**ICOI** Spring Symposium and 13th IPS Symposium  
April 22-24, 2010  
*See us at Booth #320*

MEISINGER  
GERMANY / USA

**MEISINGER USA, L.L.C.**  
7442 South Tucson Way • Suite 130 • Centennial • Colorado 80112 • USA  
Tel.: +1 (303) 268-5400 • Fax: +1 (303) 268-5407  
E-Mail: [info@meisingerusa.com](mailto:info@meisingerusa.com) • [www.meisingerusa.com](http://www.meisingerusa.com) • [www.bone-management.com](http://www.bone-management.com) • [www.occlusalrouter.com](http://www.occlusalrouter.com)

# OsseoSpeed™ TX

– Growing power from Astra Tech

IMPLANT WITH  
TAPERED APEX



## OsseoSpeed™ TX implants

At Astra Tech Dental we continuously strive to enhance products and simplify procedures to provide reliable long-lasting successful results and, at the same time, make your day-to-day work a little bit easier. OsseoSpeed™ TX is designed to do just that:

- Predictable results for all patients, including compromised cases where implants with other surface treatments may be less effective
- Tapered apex allows for easier implant installation in all indications
- Improved biological support for immediate installation and early loading protocols
- Clinically proven to maintain marginal bone levels

## Superior long-term bone maintenance

In more than 40 published studies\*, the mean marginal bone level reduction when using the Astra Tech Implant System™ is only 0.3 mm during the first year of loading and stable thereafter. This result is at least four times better compared to the current standard norm of 1.3 mm of bone loss after five years.

\*Reference available upon request

**WHY  
SETTLE  
FOR LESS?**



**ASTRATECH  
DENTAL**  
SINCE 1977

**ASTRA**  
ASTRATECH

 A company in the  
Astra-Tech Group

# Scenes from the AO in Orlando

*The Academy of Osseointegration hosted its annual meeting March 4-6*

Astra Tech develops, manufactures, markets dental implants and advanced disposable products for use within healthcare. The company develops products that enhance treatment results, simplify work for dental professionals and help cut healthcare costs.



KAT Implants is a manufacturer and distributor of KAT (Key Assisted Transfer) Implants™ system. KAT System is built around a single low-profile screwless external locking taper connection platform, which allows the same abutments to be used on implants ranging in diameter from 2.5 to 5.0 mm and in length from 6 to 14 mm. The use of abutment incorporated key and a Pick-Up Abutment™ impression method allow for an extremely accurate implant level indexing. For more information, see [www.katimplants.com](http://www.katimplants.com).



Osteogenics Biomedical is a leader in the development of innovative guided tissue regeneration products for use by oral and maxillofacial surgeons, periodontists and other clinicians involved in regenerative or implant dentistry. Based in Lubbock, Texas, the company's brands include Cytoplast® barrier membranes and PTFE suture, Safescraper® Bone Scrapers, SinCrest Sinus Lift Kit and Osteogenics Clinical Education™.



From left, Dr. George Romanos, Implant Tribune Editor in Chief Sascha Jovanoic and Dr. Lyndon Cooper.



Piezosurgery Incorporated is the exclusive importer and distributor of the patented Piezosurgery® technology in the United States and Canada. Dedicated to customer service, quality products and innovative solutions in osseous surgery; Piezosurgery Incorporated is proud to be first in ultrasonic bone surgery. (Photo/ Provided by Piezosurgery)

AD

**Dental Collab** BETA  
 FINALLY A SOLUTION FOR GETTING THAT SECOND OPINION.  
[WWW.DENTALCOLLAB.COM](http://WWW.DENTALCOLLAB.COM)  
 FIRST MONTH FREE  
 CODE: ITDC09  
 IT'S NEW

(Photos/Humberto Estrada of Dental Tribune, unless noted otherwise)

# New Orleans inspires 'Implants and All That Jazz' ICOI symposium

Springtime in New Orleans is a very special season.

The oppressive heat and humidity that grips this Southern city has yet to be felt. The carnival atmosphere of Mardi Gras is a distant memory in the French Quarter and the citizenry that seems to thrive on gaiety and laughter is ready for its next "party."

Enter the world famous New Orleans Heritage Jazz

Festival (better known as Jazz Fest), two weeks of the best jazz, rhythm and blues, pop and otherwise great music this country has produced.

From April 24–May 2, the Big Easy will be hosting hundreds of musical acts as it celebrates its heritage: jazz.

Names like Wynton Marsalis, Pete Fountain, Joe Cocker, Pete Seeger, James Taylor, Bonnie Raitt, Tony Bennett, the Neville Bros., Bon Jovi, Dr. John and more will be playing at the fairground tents. Oh, and did we mention the food served at this party is not too bad either?

It is for this reason the ICOI is delighted to be holding its Spring Symposium, aptly titled, "Implants and All That Jazz" in New Orleans.

Plan to attend this symposium, from April 22–24, which is the ICOI's annual implant prosthetic symposium and will feature several world-class restorative clinicians sharing the latest clinical techniques in the prosthetic discipline.

A significant portion of the program will be devoted to implant placement as well. A partial list of speakers includes Drs. David Guichet, Scott Ganz, Myron Nevins, Steve Wallace, Michael Pikos, Jaime Lozada, Joseph Kan, Ed Mills, Jack Krauser, Hom-Lay Wang, Larry Grillo and Craig Misch.

Pre-symposium workshops conducted by sponsors include BioHorizons, Imtec, Nobel Biocare, Nubone, Piezosurgery and SomnoMed.

The ICOI offers a scientific program schedule for your days. The nights, at Jazz Fest, you may remember for a lifetime.

This meeting will feature simultaneous translation into Spanish. Do not delay in registering and in making hotel reservations.

Visit the Web site at [www.icoi.org](http://www.icoi.org) for full details. ■



*'Implants and All That Jazz,' an ICOI symposium, takes place April 22–24 in New Orleans. (Photo/stock.xchange)*

ADS

## NobelActive™

A new direction in implants.

**Dual-function prosthetic connection.**

**Bone-condensing property.**

**Adjustable implant orientation for optimal final placement.**

**Built-in platform shifting.**

**High initial stability, even in compromised bone situations.**

**10 YEARS WITH TIUNITE® SURFACE**  
New data confirm long-term stability.

NobelActive equally satisfies surgical and restorative clinical goals. NobelActive thread design progressively condenses bone with each turn during insertion, which is designed to enhance initial stability. The sharp apex and cutting blades allow surgical clinicians to adjust implant orientation for optimal positioning of the prosthetic connection.

Restorative clinicians benefit by a versatile and secure internal conical prosthetic connection with built-in platform shifting upon which they can produce excellent esthetic results. Based on customer feedback and market demands for NobelActive, the product assortment has been expanded – dental professionals will now enjoy even greater

flexibility in prosthetic and implant selection. Nobel Biocare is the world leader in innovative and evidence-based dental solutions. For more information, contact a Nobel Biocare representative at 800 322 5001 or visit our website.

[www.nobelbiocare.com](http://www.nobelbiocare.com)

Nobel Biocare USA, LLC, 22715 Savi Ranch Parkway, Yorba Linda, CA 92887; Phone 714 202 4800; Toll free 800 322 5001; Tech. support 888 725 7100; Fax 714 202 9003

Nobel Biocare Canada, Inc., 8153 Leslie Street, Unit 100, Richmond Hill, ON L4B 4N1; Phone 905 782 3600; Toll free 800 693 8584; Fax 905 883 4242

Disclaimer: Some products may not be regulatory cleared/released for sale in all markets. Please contact the local Nobel Biocare sales office for current product assortment and availability.

# Astra Tech launches OsseoSpeed TX line at AO

Astra Tech, a leading provider of comprehensive solutions for dental implant therapy, launched its OsseoSpeed™ TX implant line to the U.S. market at this year's AO Annual Meeting.

The OsseoSpeed TX implant comes as the next step in the continuous evolution of the Astra Tech Implant System™ with its modified tapered apex design, first introduced with the launch of its narrow two-piece implant, OsseoSpeed TX 3.0 S in June 2008.

This new design modification allows for easier implant installation in all indications, especially in soft bone where under-preparation is often desired.

Ensuring optimal long-term

esthetic results, all key features of the Astra Tech BioManagement Complex™, including OsseoSpeed fluoride-modified surface, Micro-Thread™ at the implant neck, a Conical Seal Design™ and the Connective Contour™, are maintained.

"We are extremely pleased with the overwhelming, positive response to this new design modification, received during the AO Annual Meeting," said Scott Root, president and CEO, Astra Tech North America. "We are confident that this new modification will help to further simplify the implant treatment procedure for all our customers while still delivering the optimal results they've come to expect."



(Photo/Astra Tech)

### About Astra Tech Implant System

The Astra Tech Implant System™ allows for full flexibility to meet the needs of every clinical situation whether one- or two-stage surgery, immediate placement or immediate load protocols, and in all bone qualities.

In more than 40 published articles, it is well-documented that when using the Astra Tech Implant System, the mean marginal bone level reduction is only 0.5 millimeters during the

first year of loading and maintained thereafter.

These results are at least four times better when compared to the current standard norm of 1.5 mm marginal bone loss after five years.\*

To learn more about OsseoSpeed-TX or other Astra Tech products and services, call (800) 531-3481 or visit [www.astratechdental.com](http://www.astratechdental.com). **IT**

\* References available upon request from Astra Tech.

ADS

**Dental Collab** BETA  
 FINALLY A SOLUTION TO  
**CREATE, SHARE & COLLABORATE.**  
[WWW.DENTALCOLLAB.COM](http://WWW.DENTALCOLLAB.COM)  
 FIRST MONTH FREE  
 CODE: ITDC09

For more dental news,  
 see [www.dental-tribune.com](http://www.dental-tribune.com)

## Bone Regeneration for Ideal Implant Placement

April 1-2, 2010    April 14-15, 2011

### Course Offerings

- When to bone graft
- Graft options
- State-of-the-art surgical technology
- Treatment sequencing
- Best materials to use
- Management of complications & failures

## Implant & Periodontal Plastic Surgery in the Esthetic Zone

September 23-24, 2010    September 22-23, 2011

### Course Offerings

- Constituents of an ideal smile
- Implant esthetics and surgical techniques
- Smile design
- Gingival esthetics and surgical techniques

Powerful & Thought-Provoking Continuing Education Courses

[www.sonickseminars.com](http://www.sonickseminars.com)    Voice: 203.254.2006

16 CEUs

"I finally found a practical and convenient way to learn from the best dentists from around the world" - *Dr. Ty Vardanian, CA*

"The most advanced, up-to-date and digitally incorporated higher learning program that I have experienced." - *Raj Kumar, DDS from London, UK*

www.gIDEdental.com



Clinical Video Downloads

Lecture-on-Demand

DVD and iPOD Education

Video Interviews

1-Year Master Program

Hands-on-Training

Get CE Credits Online

World Renowned Experts! Unparalleled Academic Quality!

Dr. Pascal Magne, Dr. Ed McLaren, Dr. Brian LeSage, Dr. Sascha Jovanovic, Dr. Massimo Simion, Dr. Frank Celenza, Dr. Bernard Touati, Dr. Joseph Kan, Dr. Todd Scheyer, Dr. Sam Strong, Dr. Galip Gurel, Dr. Ron Jackson, Dr. John McSpadden, Dr. Peter Wöhrle, Dr. Ken Malament and many more

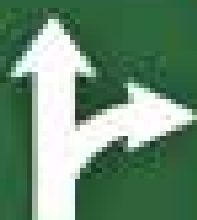
esthetic dentistry | implant dentistry | periodontics | endodontics | prosthodontics and more...

# Just because the economy is unstable does not mean that your practice has to be.


LVI will steer you in the right direction!

EXIT 1A

Complacency  
This Lane  
Achievers  
Merge Right



MOTIVATION  
SOLUTIONS  
SUCCESS

This EXIT   
10 Miles  
25 Miles

Now is the time to take the driver's seat and invest in yourself and your future.  
Recession-proof your practice with an education from LVI.  
Bring a new enthusiasm to yourself, your practice, your team, and your patients!  
You can have the practice of your dreams, and we can show you how.

|                  |                |                   |            |                  |                 |
|------------------|----------------|-------------------|------------|------------------|-----------------|
| London, ON       | April 16-17    | Champaign, IL     | May 21-22  | French Lick, IN  | July 16-17      |
| Nashville, TN    | April 16-17    | Robinson, MI      | June 1-4   | Appleton, WI     | July 30-31      |
| Milwaukee, WI    | April 16-17    | Santa Cruz, CA    | June 11-12 | Rapid City, SD   | August 20-21    |
| Las Vegas, NV    | April 23-24    | Hamilton, ON      | June 11-12 | Cincinnati, OH   | August 27-28    |
| Palm Springs, CA | April 30-May 1 | Destin, FL        | June 11-12 | Minneapolis, MN  | September 10-11 |
| Washington DC    | May 7-8        | S. Lake Tahoe, CA | June 18-19 | Long Beach, CA   | September 17-18 |
| Victoria, BC     | May 14-15      | Chicago, IL       | June 25-26 | Robert Park, CA  | September 24-25 |
| Austin, TX       | May 14-15      | Windsor, ON       | June 25-26 | Calgary, AB      | September 24-25 |
| Hilton Head, SC  | May 23-22      | Williamsburg, VA  | July 9-10  | Lincolnshire, IL | September 24-25 |

LVI is bringing 11 CE credits TO YOU with  
a regional event in your area!

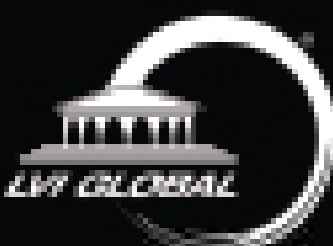
For complete details visit [www.LVIRegionalEvents.com](http://www.LVIRegionalEvents.com)

No Interest Financing Available Through  | 

If paid in full within the promotional period of 12 months, interest will be charged to your account from the purchase if the balance is not paid in full within the promotional period 12 months, if you make a late payment, or if you are otherwise in default.

**ADA CERP**® | Continuing Education  
Recognition Program

LVI Global is an ADA CERP Recognized Provider. ADA CERP is a service of the American Dental Association to assist dental professionals in identifying quality providers of continuing dental education. ADA CERP does not approve or endorse individual courses or instructors, nor does it imply acceptance of credit hours by boards of dentistry. LVI Global designates this activity for 11 continuing education credits.



Sponsored by



TRIMAC

MAC

EMBRACE CHANGE. CHANGING LIVES.



Practice Management Solutions  
Empowering Your Practice  
Improving Your Bottom Line